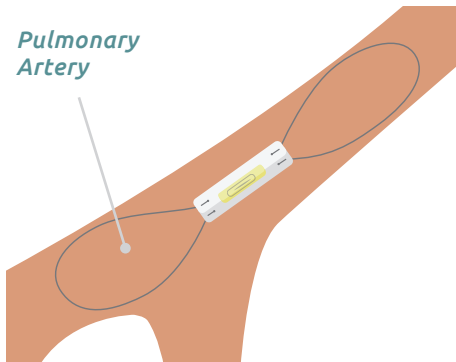


CardioMEMS™ HF System



WHAT IS IT?

This is a wireless sensor that sits in your pulmonary artery (a vessel carrying blood from your heart to your lungs). It measures the pressure in your pulmonary artery. With these measurements, your care team can better understand how your heart is squeezing and relaxing, and whether the fluid level in your body has increased or decreased.

It is implanted in the cardiac catheterization laboratory, therefore you don't need open heart surgery. It does not require a battery and is designed to remain in place for life.

HOW DOES IT WORK?



At home you will lay on a special pillow that reads the pressures in your pulmonary artery. The pressure readings are sent electronically to your care team in real-time, helping them determine how to best care for you.

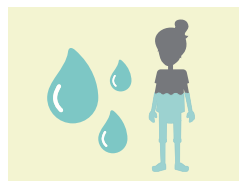
Your care team will call if your numbers are out of range. They may make changes to your medicines or ask to see you in clinic.

HOW WILL IT HELP?

Since your heart pressures are reviewed more often with a CardioMEMS™ HF System, your care team will better understand how your heart is functioning and what medicines are needed. It may also:



decrease chances of being admitted to the hospital for heart failure treatment*



improve quality of life by helping to manage your fluid status*



decrease the number of cardiac catheterizations needed in the future

*Abraham, W. T., Adamson, P. B., Bourge, R. C., Aaron, M., Costanzo, M. R., Stevenson, L. W., ... Yadav, J. S., for the CHAMPION Trial Study Group. (2011). Wireless pulmonary artery haemodynamic monitoring in chronic heart failure: A randomised controlled trial. *The Lancet*, 377(9766), 658-666. [http://dx.doi.org/10.1016/S0140-6736\(11\)60101-3](http://dx.doi.org/10.1016/S0140-6736(11)60101-3)