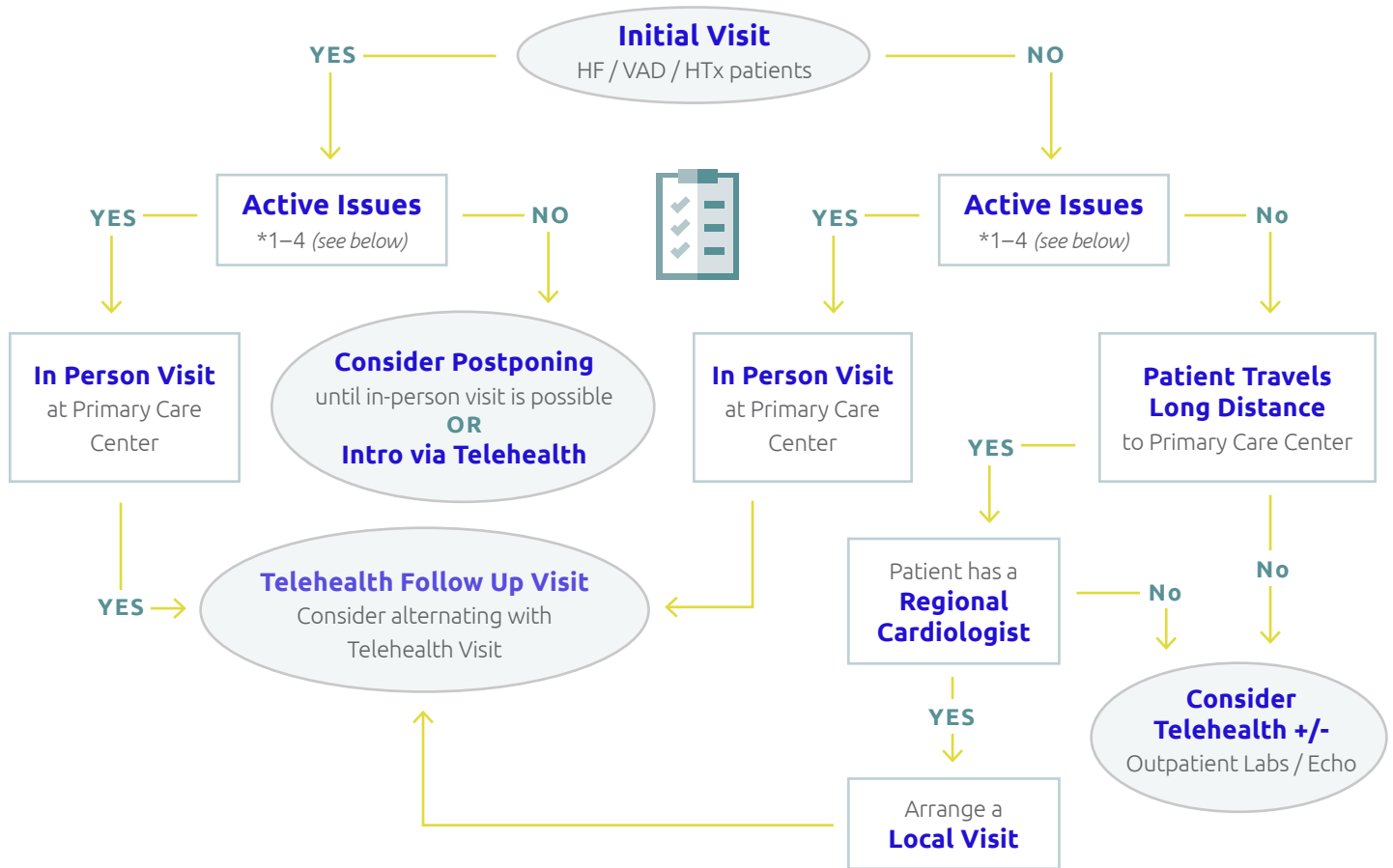


Telehealth Visits:

An Algorithm to Determine Optimal Candidacy



Active Issues



- HF PATIENTS:** active or recently compensated heart failure, recent illness, abnormal labs
- VAD PATIENTS:** less than 30 days post discharge, device alarms, symptoms of heart failure, concern for infection
- HTX PATIENTS:** less than 3 months since surgery, frequent sub-therapeutic drug levels, concern for non-compliance, recent illness or concern for infection, recent rejection
- LOGISTICAL / SOCIAL CONCERNS:** parental preference, language barriers, access to Wi-Fi or appropriate devices, etc.