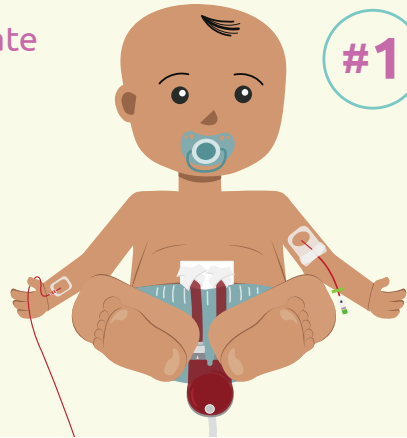


Arterial Line and Separate Venous Line (PICC, CVL, PIV) for Bivalirudin

#1



- Run bivalirudin through the venous line
- Run non-heparinized flush (KVO) through the arterial line
- Do not pause bivalirudin for lab draws
- Draw labs from the arterial line



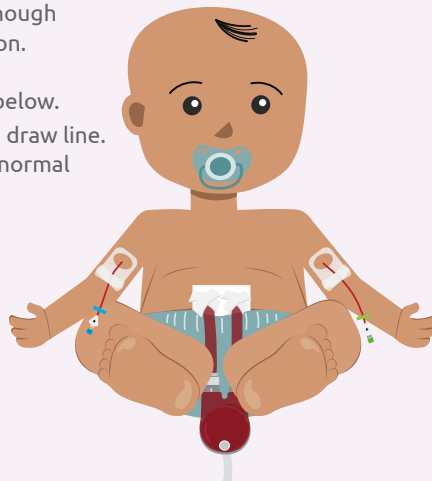
At minimum, fill blue collection tube to top line

- < 15kg use 1.8mL collection tube
- > 15kg use 2.7mL collection tube

NOTE: Fill slightly higher volumes (2mL, 3mL) to accommodate for lab spinning, separating, small bubbles, etc.

Two Separate Venous Lines (combination of PICC, PIV or CVL)

#2



- Verify the tip of the blood draw line and the bivalirudin line are far enough apart to avoid cross contamination. If too close, and there is cross contamination, go to option #3 below.
- Do not use heparin in your blood draw line. Run (KVO) or lock your line with normal saline flush.
- Do not pause bivalirudin
- Flush the blood draw line with 5 ml of normal saline
- Draw 5 ml of waste
- Draw sample
- If able, give back waste
- Flush line with normal saline

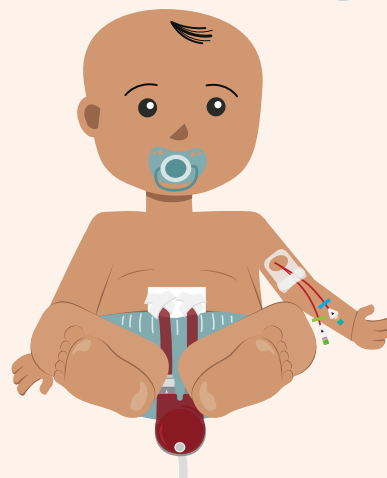
If the lab result is lower than expected, check for the following:



- incorrect dosing weight
- incorrect infusion rate
- line is leaking
- syringe is not engaged properly
- if single venous line (PICC or CVL) infusion may have been paused too long
- line that is infusing bivalirudin is infiltrated

One Double Lumen Venous Line (PICC or CVL)

#3



- Run (KVO) or lock your blood draw lumen with normal saline
- Pause and clamp the bivalirudin, as close as possible to the patient, for 5 min
- Flush the blood draw lumen with 5 ml of normal saline
- Draw 5 ml of waste
- Draw sample
- If able, give back waste
- Flush blood draw lumen with normal saline
- Restart bivalirudin infusion

If the lab result is higher than expected, check for the following:



- incorrect dosing weight
- incorrect infusion rate
- cross contamination with the infusion being too close to where you are drawing blood or the infusion was not paused long enough
- other infusions going with bivalirudin leading to variable delivery
- heparin is being used in the blood draw line