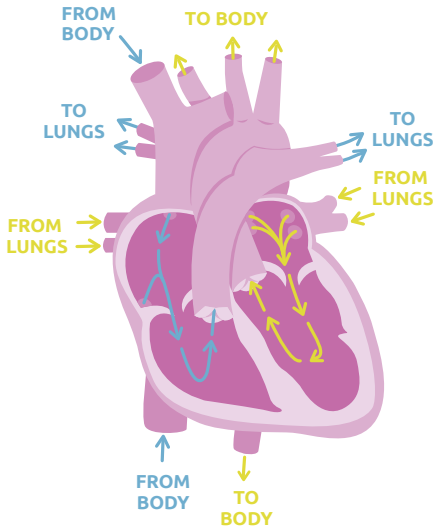


Muscular Dystrophy

An Introduction to Heart Failure



WHAT IS THE HEART & HOW DOES IT WORK?

The heart is a muscle that pumps blood around the body. The four chambers in the heart are separated into the right and left sides.

The right side

of the heart fills with blood from the body and squeezes to pump blood to the lungs to get oxygen.

The left side

of the heart fills with blood from the lungs, and squeezes to pump blood with oxygen to the body.



WHAT IS HEART FAILURE?

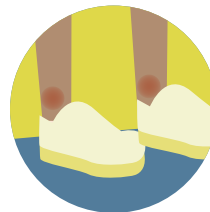
A group of symptoms that occur when the heart doesn't squeeze enough to move blood out or relax enough to let blood in.

SYMPTOMS & SIGNS OF HEART FAILURE

Heart Failure in muscular dystrophy may look different based on your muscle strength and lung function. The most common symptoms include:



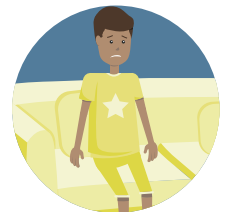
Poor appetite, belly pain, nausea, and/or vomiting



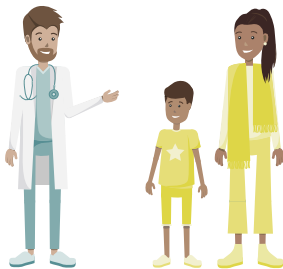
Swelling of the belly, feet, ankles, or around eyes



Not able to lie flat to sleep, wake up gasping for air, or coughing up fluid



Less energy, and/or feel tired faster



CALL YOUR DOCTOR

Please talk to your doctor if you have any questions or are worried about your child's heart function. Your doctor may ask to take more images of the heart, order bloodwork, and discuss further evaluation and treatment options.